

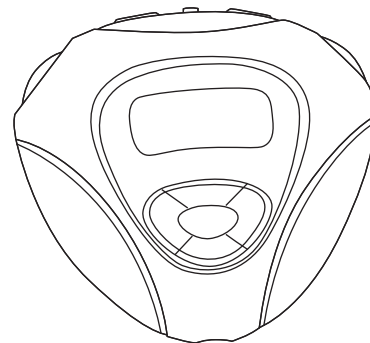
**Memorex®**

Is it live or is it Memorex?™

**MMP8563  
(Suffix A)**

**User's Guide**

*Personal FM Stereo  
MP3/WMA/WAV Player*



Memcorp, Inc.  
Weston, FL  
Printed in China

Visit our website at [www.memorexelectronics.com](http://www.memorexelectronics.com)

**Before operating this product,  
please read these instructions completely.**

# PRECAUTIONS

## COPYRIGHT:

- Distributing copies of MP3, WMA with DRM or WAV tracks without permission is a violation of international copyright laws.

## SAFETY:

- Vibration experienced during walking or exercising will not affect the player. However, dropping the player or dropping a heavy object on the player may result in damage or sound distortion.
- Avoid spilling any liquid onto or into the player.
- Do not leave the player in a location near heat sources; in a location subject to direct sunlight, excessive dust, sand, moisture, rain or mechanical shock; on an unlevel surface; or in a car with the windows closed during periods of excessive heat.

## ROAD SAFETY:

- Do not use headphones while driving, cycling or operating any motorized vehicle. It may create a traffic hazard and it is illegal in some areas. It can be potentially dangerous to play your headset at a high volume while walking, especially at pedestrian crossings. You should exercise extreme caution or discontinue use in potentially hazardous situations.

## FCC WARNING:

- This equipment may generate or use radio frequency energy. Changes or modifications to this equipment may cause harmful interference unless the modifications are expressly approved in the instruction manual. The user could lose the authority to operate this equipment if an unauthorized change or modification is made.

## FCC DECLARATION

This device complies with Part 15 of the FCC rules. Operation is subject to the following two conditions: 1) This device may not cause interference, and 2) This device must accept any interference received, including interference that may cause undesired operation.

**Warning:** Changes or modifications to this unit not expressly approved by the party responsible for compliance could void the user's authority to operate the equipment.

**NOTE:** This equipment has been tested and found to comply with the limits for a Class B digital device, pursuant to Part 15 of the FCC Rules. These limits are designed to provide reasonable protection against harmful interference in a residential installation. This equipment generates, uses and can radiate radio frequency energy and, if not installed and used in accordance with the instructions, may cause harmful interference to radio communications.

However, there is no guarantee that interference will not occur in a particular installation. If this equipment does cause harmful interference to radio or television reception, which can be determined by turning the equipment off and on, the user is encouraged to try to correct the interference by one or more of the following measures:

- Reorient or relocate the receiving antenna.
- Increase the separation between the equipment and receiver.
- Connect the equipment into an outlet on a circuit different from that to which the receiver is connected.
- Consult the dealer or an experienced radio/TV technician for help.

*Shield cable must be used with this unit to ensure compliance with class B FCC limits.*



**Dear Customer:**

Selecting fine audio equipment such as the unit you've just purchased is only the start of your musical enjoyment. Now it's time to consider how you can maximize the fun and excitement your equipment offers. This manufacturer and the Electronic Industries Association's Consumer Electronics Group want you to get the most out of your equipment by playing it at a safe level. One that lets the sound come through loud and clear without annoying blaring or distortion and, most importantly, without affecting your sensitive hearing.

Sound can be deceiving. Over time your hearing "comfort level" adapts to higher volumes of sound. So what sounds "normal" can actually be loud and harmful to your hearing. Guard against this by setting your equipment at a safe level BEFORE your hearing adapts.

**To establish a safe level:**

- Start your volume control at a low setting.
- Slowly increase the sound until you can hear it comfortably and clearly, and without distortion.

**Once you have established a comfortable sound level:**

- Set the dial and leave it there.

Taking a minute to do this now will help to prevent hearing damage or loss in the future. After all, we want you listening for a lifetime.

**We Want You Listening For A Lifetime**

Used wisely, your new sound equipment will provide a lifetime of fun and enjoyment. Since hearing damage from loud noise is often undetectable until it is too late, this manufacturer and the Electronic Industries Association's Consumer Electronics Group recommend you avoid prolonged exposure to excessive noise. This list of sound levels is included for your protection.

**Decibel**

<u>Level</u>	<u>Example</u>
30	Quiet library, soft whispers
40	Living room, refrigerator, bedroom away from traffic
50	Light traffic, normal conversation, quiet office
60	Air conditioner at 20 feet, sewing machine
70	Vacuum cleaner, hair dryer, noisy restaurant
80	Average city traffic, garbage disposals, alarm clock at two feet

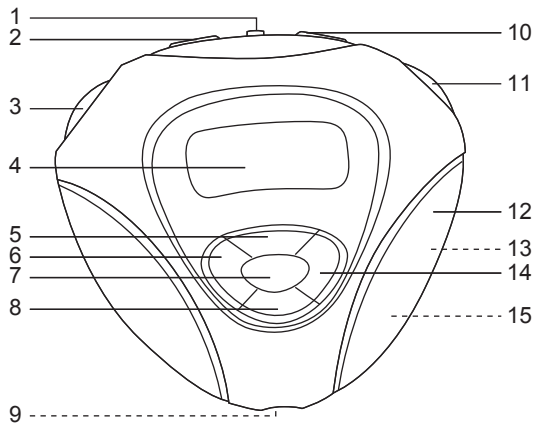
**THE FOLLOWING NOISES CAN BE DANGEROUS UNDER CONSTANT EXPOSURE:**

90	Subway, motorcycle, truck traffic, lawn mower
100	Garbage truck, chain saw, pneumatic drill
120	Rock band concert in front of speakers, thunderclap
140	Gunshot blast, jet engine
180	Rocket launching pad

Information courtesy of the Deafness Research Foundation.



## LOCATION OF CONTROLS



- |  |  |
|--|--|
| 1. USB Port  | 9. Headphone Jack<br>(Bottom of Unit)        |
| 2. LOCK Switch                                     | 10. VOLUME +/- Buttons                       |
| 3. Power/Stop Button                               | 11. PLAY/PAUSE ►   Button                    |
| 4. Display   | 12. Battery/Card Cover                       |
| 5. EQ/UP (Equalizer/<br>Navigation Up) Button      | 13. Memory Card Compartment<br>(Under Cover) |
| 6. Skip/Search ◀▶ Button                           | 14. Skip/Search ▶▶ Button                    |
| 7. MODE Button                                     | 15. Battery Compartment<br>(Under Cover)     |
| 8. ▷/DN (Playback Mode/<br>Navigation Down) Button |  |

## BATTERY INSTALLATION

When the bars in the battery indicator (in the display) become low (see figure 1), replace the battery as follows.

1. Open the Battery/Card cover by pressing in and pulling off the cover as shown in figure 2.
2. Slide the Battery contact cover and then lift it up as shown in figure 3.
3. Insert one (1) "AAA" battery as shown in figure 4. An alkaline battery is recommended for the longest playing time.
4. Replace the Battery contact cover plate back to the top of the battery, then slightly press it down and slide it back until it locks in place as shown in figure 5.
5. Put the Battery/Card cover back on until it snaps in place.

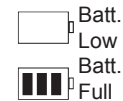


Figure 1

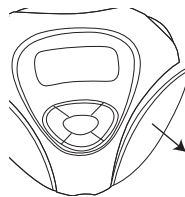


Figure 2

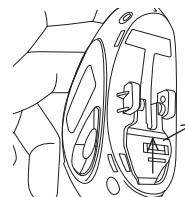


Figure 3

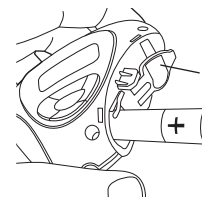


Figure 4

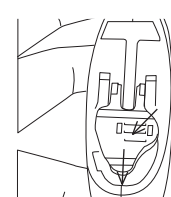


Figure 5

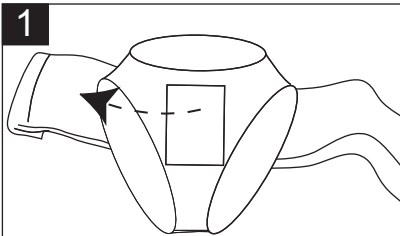
### BATTERY PRECAUTIONS

Follow these precautions when using a battery in this device:

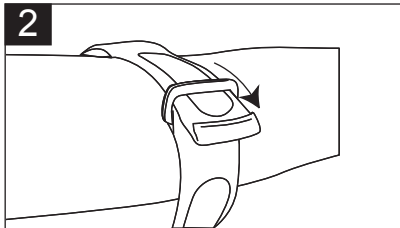
1. Use only the size and type of battery specified.
2. Be sure to follow the correct polarity when installing the battery as indicated. Reversed batteries may cause damage to the device.
3. If the device is not to be used for a long period of time, remove the battery to prevent damage or injury from possible battery leakage.
4. Do not try to recharge batteries not intended to be recharged; they can overheat and rupture. (Follow battery manufacturer's directions.)



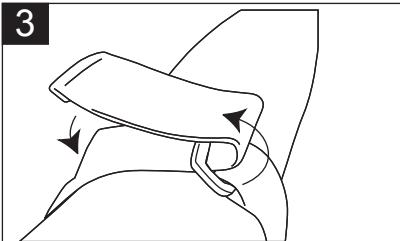
## USING THE ARM STRAP



Insert the arm strap into the slot on the rear of the unit and pull through.



Pull the arm strap and insert it into the buckle.



Insert the arm strap into the slot on the rear of the unit and pull through.

### TO INSERT UNIT IN THE HOLDER:

Lift up the top flap on the holder, then insert the unit.

### TO REMOVE UNIT FROM THE HOLDER:

Lift up the top flap on the holder, then remove the unit.

## INSTALL "DIGITAL AUDIO PLAYER" SOFTWARE

### TO INSTALL THE "DIGITAL AUDIO PLAYER" CD SOFTWARE

#### For Windows ME, Windows2000 or Windows XP:

Windows will automatically detect the audio player without installing the CD software when the USB cable is connected.

#### For Macintosh OSX:

Macintosh OSX will automatically detect the audio player without installing the CD software. Do not install the software when using a Macintosh.

#### For Windows98SE:

The USB mass storage function will not be activated without driver installation. To activate the USB mass storage function, please use the installation CD-Rom to install the driver.

For Windows 98SE, if you are connecting your player to your computer for the first time, please follow these instructions:

#### Procedure to Install Player Driver

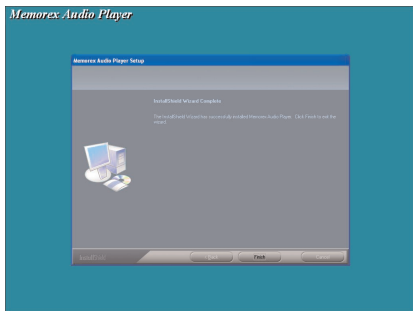
1. Insert the Installation CD-Rom into the CD Drive; the auto-run program will display the Main Menu window. Click "Software Drivers".

**NOTE:** If the Main Menu window does not appear, double click "Memorex Startup CD" application file on the Installation CD to open the Main Menu window.

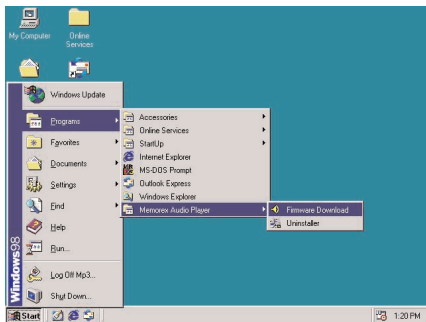




- After successfully installing the driver software, click "Finish" to finish the installation and exit the Setup menu.



- When the installation has completed, the new program, "Memorex Audio Player", will be added to the PROGRAM menu on your computer.



## TRANSFERRING FILES

You can download digital music files from the Internet or use encoding software to convert music that you have on an audio CD into MP3 or WMA format. Once these files are stored on your computer you can easily copy them to your player.

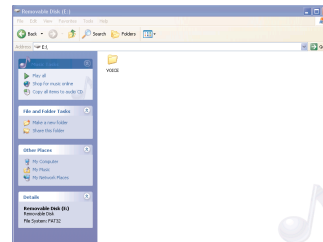
Connect the computer to your player using the supplied USB cable.

Press the Power/Stop button to turn the unit on.

A "Removable Disk" window will automatically pop up on your computer screen.

To add more files and songs to your player simply drag and drop MP3, WMA or WAV files from anywhere on your computer into the "Removable Disk" window.

TRANSFER MODE  
USB Connected  
Ready



**IMPORTANT:** A WMA file with DRM will not play back if you directly drag and drop it into the "Removable Disk" window. You must use MMJB or Windows Media Player to transfer copy protected files.

When you are finished, see the Safely Remove Hardware procedure on the next page before disconnecting the player.

## SAFELY REMOVE HARDWARE

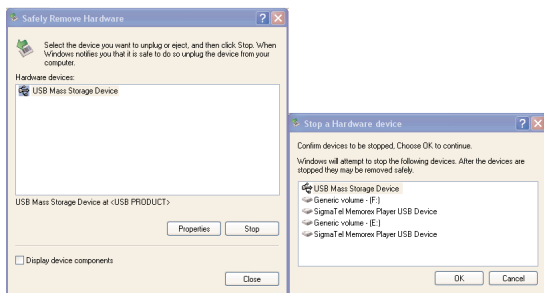
### SAFELY REMOVING YOUR PLAYER FROM THE COMPUTER

**NOTE:** To avoid damage to your player or data loss, always follow the procedure listed below before disconnecting the USB cable from your computer or disconnecting the player from the USB cable.

Using your mouse, double click the "Safely Remove Hardware" icon on the task bar.



From the "Safely Remove Hardware" window, select "USB Mass Storage Device" and click the "Stop" button. The "Stop a Hardware Device" window will pop up as shown below. Click "OK". When the "Safe to Remove Hardware" window is displayed, you may remove the player from the USB cable or remove the USB cable from the computer.



### NOTES:

- If the "Safely Remove Hardware" icon is not displayed on the task bar, please double click on My Computer Right click on "Removable Disk" and left click on "Eject". Then it will be safe to remove the player from the computer.
- The "Safely Remove Hardware" procedure is not necessary for Win98and Win98SE users.

## INSTALLING MUSICMATCH JUKEBOX

### MUSICMATCH JUKEBOX INSTALLATION (PC ONLY):

1. Insert the Installation CD-ROM into the CD Drive, the auto-run program will display the Main Menu. Click "Install Musicmatch Jukebox".  
**NOTE:** If the Main Menu Window does not appear, double click "Memorex Startup CD" Application file in the installation CD in order to open the Main Menu.
2. Follow the online prompts to complete the installation.

### DOWNLOADING TRACKS TO THE UNIT USING MUSICMATCH JUKEBOX (MMJB)

Please follow these instructions for transferring tracks from the computer to the unit.

**NOTE:** WMA DRM protected files will not play if you use the "drag and drop" procedure. You must follow the procedure below to play WMA DRM files on your MMP8563.

1. Install the MMJB Software as described above.
2. Turn the unit ON, then connect the USB cable to the unit and the USB port of the computer. "Transfer Mode" will be displayed on the LCD when it is properly connected.
3. Open MMJB and click " Portable Device" on the left hand side of the window. The "Portable Device Manager" window will pop up. MMJB may need some time while synchronizing with the device.
4. You may now either:
  - a. Click the "Add" button and search for tracks or Playlists. Highlight the desired tracks or Playlists and click "Add".
  - b. Drag and drop tracks into the Portable Device Manager window from anywhere on your computer or from the MMJB Library.
5. The tracks are now properly transferred to the player. Follow the "Safely Remove Hardware" procedure and unplug the unit from the computer. Insert the headphones and listen to your music.

### RECORDING TRACKS FROM A CD TO A COMPUTER USING MUSICMATCH JUKEBOX (MMJB)

1. Click the "Copy From CD" button on the left hand side of the window to open the Recorder window.
2. Insert an audio CD into your CD-ROM drive.  
(CD Lookup will read your CD and attempt to fill in Album, Artist, and Track (Tag) information if the computer connected to the internet)
3. Tick the boxes next to the tracks that you wish to record.
4. Click the "Start Copy" button. (The files will be recorded as MP3 files at 128Kbps). MMJB will start to record from the audio CD, to the digital file format you choose, and place recorded files into the Library.

**Important Note:** For further details please consult the "Musicmatch User Guide" located on the Main Menu of the Installation CD.

### EXTERNAL MEMORY CARD

**TO AVOID DAMAGE,** make sure the unit is off before inserting or removing the card.

1. Remove the Battery/Card cover by pressing in and cover as shown in figure 1.

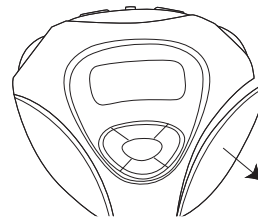


Figure 1

2. Insert a SD/MMC memory card (not included) up to 512MB, facing up as shown in Figure 2.

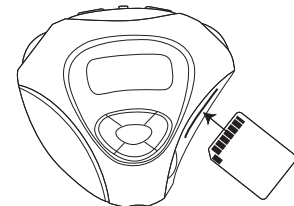


Figure 2

3. Connect the USB cable as described previously.

4. Drag MP3 and WMA files into the SD/MMC memory card's "Removable Disk" window.

**NOTE:** The WMA file with DRM will not playback if you directly drag and drop it into the "Removable Disk" window. See page 14 for downloading WMA files with DRM from the computer to your player.

5. To remove the SD/MMC memory card, push the edge of the card as shown in Figure 3, then the card will spring out. Carefully remove the card.

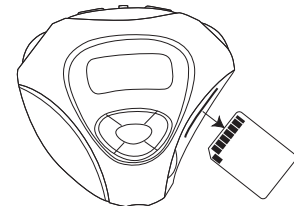


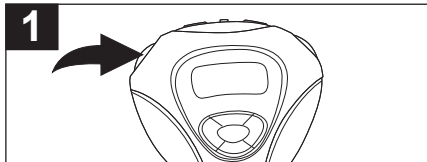
Figure 3

6. Replace the cover until it snaps in place.

**NOTE:** If the external memory card is inserted while in the Music Player mode, the memory card indicator will appear at the top side on the display.

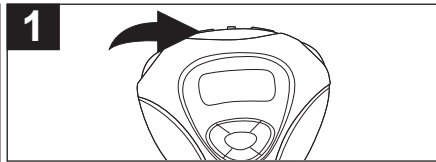
## OPERATION

### TURNING THE POWER ON/OFF



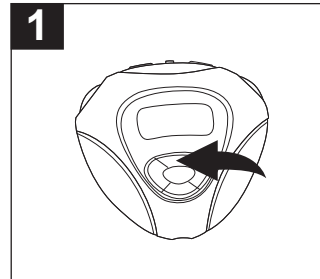
Turn the unit on by pressing the Power/Stop button; the Memorex start screen will appear in the display temporarily. Then the Music Player menu will appear and the MP3/WMA track's information will appear in the display. To turn the unit off, press and hold the Power/Stop button; "Hold Down To Power Off" will appear in the display. The unit will turn off after it counts up from one to three. Do not release the Power/Stop button until the unit turns off.

### LOCK SWITCH



Slide the LOCK switch to the Lock position; the lock indicator will appear in the display and no buttons will function. This is useful when you do not want the station/track changed by accidentally pressing a button. Slide the LOCK switch to the Unlock position to cancel the Lock function. **NOTE:** If you attempt to turn the power on while the LOCK switch is in the Lock position, the unit will show "LOCKED" and the lock indicator and then turn off.

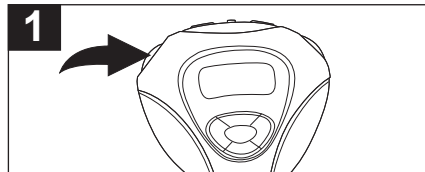
### EQ—MUSIC PLAYER ONLY



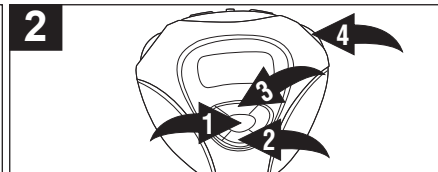
While in the Music Player menu, repeatedly press the EQ/UP button to select the desired EQ setting (Normal, Rock, UBass (Ultra Bass), Jazz, Classic(al) or Pop); the selected EQ setting will appear at the bottom left of the display.

## OPERATION (CONTINUED)

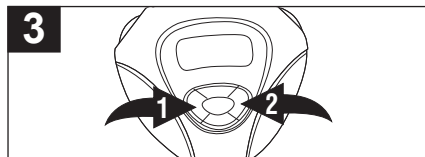
### TO LISTEN TO THE FM RADIO



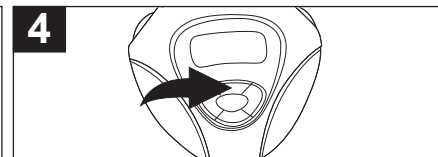
Turn the unit on by pressing the Power/Stop button; the Memorex start screen will appear in the display temporarily. Then the Music Player menu will appear and the MP3/WMA's track information will appear in the display.



Press the MODE button ❶; the Main Menu will appear. Scroll to FM Tuner using the >/DN ❷ or EQ/UP ❸ button then press the PLAY/PAUSE ❹ button to select it; the FM Tuner will appear.



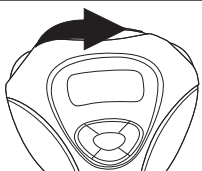
Select a station using the Skip/Search ❶ or ❷ button. For rapid search tuning, press and hold the Skip/Search ❶ or ❷ button for one second then release; the unit will automatically search and stop on the next strongest station.



When a station is broadcasting in stereo, "STEREO" will appear in the display. Press the EQ/UP button to listen in mono, "STEREO" will disappear from the display. Press the EQ/UP button again to return to stereo. If the station is not strong enough or is not broadcasting in stereo, "STEREO" will not appear.

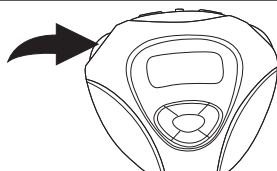
## OPERATION (CONTINUED)

5



Press the VOLUME +/- buttons to increase or decrease the volume.

6



To turn the unit off, press and hold the Power/Stop button; "Hold Down To Power Off" will appear in the display. The unit will turn off after it counts up from one to three. Do not release the Power/Stop button until the unit turns off.

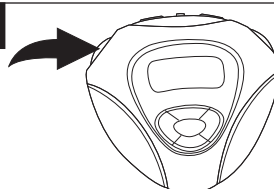
### ANTENNA

**FM**—The headphones act as an antenna for FM. Extend the headphone wire for best FM reception.

## OPERATION (CONTINUED)

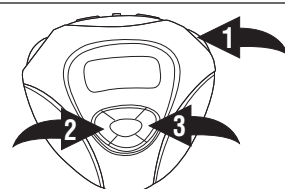
### TO MANUALLY SET A STATION INTO MEMORY

1



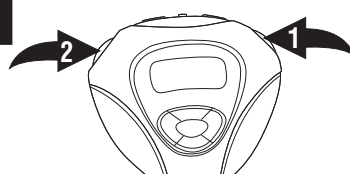
Turn the unit on by pressing the Power/Stop button. Select the FM Radio mode and tune a station as described on pages 18 and 19.

2



Press the PLAY/PAUSE ►|| button 1; "STORE" will appear in the display. Select a preset number ("Channel 01" to "Channel 10") by using the Skip/Search ◀◀ or ►► button.

3

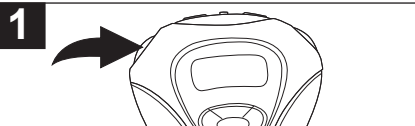


When the desired memory number appears, press the PLAY/PAUSE ►|| button 1 to store the preset; "STORE" will disappear from the display and the station will be set into memory.

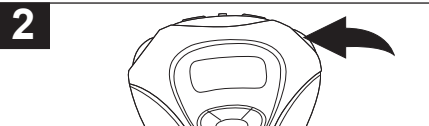
To cancel and not store the Station, press the Power/Stop button 1; "Store" will disappear from the display.

## OPERATION (CONTINUED)

### TO AUTOMATICALLY SET STATIONS INTO MEMORY



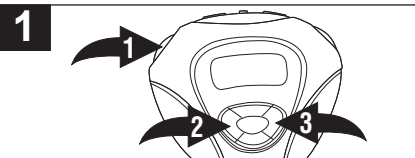
While in the FM radio mode, make sure the PRESET indicator is not in the display. If it is, press the Power/Stop button to clear it.



Press and hold the PLAY/PAUSE ►|| button until "AUTO SCAN" appears in the display. The unit will automatically store the ten next strong stations into memory. New FM Stations will overwrite previous presets.

**NOTE:** If less than ten stations have been scanned into the memory, the memory will keep at a frequency with 88MHz.

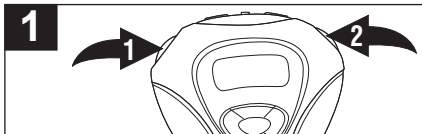
### TO RECEIVE MEMORY PRESETS



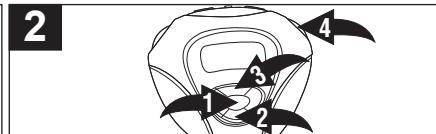
Press the Power/Stop button ❶; "PRESET" will appear in the display. Select a preset using the Skip/Search ◀▶ ❷ or ▶▶ ❸ button. Press the Power/Stop button ❶ to exit the preset mode; the "PRESET" indicator will disappear from the display.

## OPERATION (CONTINUED)

### TO LISTEN TO MP3s/WMA/WAVs



Turn the unit on by pressing the Power/Stop button ❶; the Memorex start screen will appear in the display temporarily. Then the Music Player menu will appear and the MP3/WMA's track information will appear in the display. Press the PLAY/PAUSE ►|| button ❷ to start playback; the MP3 information will appear/scroll across the display.



If the unit is in a mode other than Music Player menu, press the MODE button ❶; the Main Menu will appear in the display. Scroll to Play Now/Now Playing using the ◀/DN ❷ or EQ/UP ❸ button then press the PLAY/PAUSE ►|| button ❹ to select it; playback will start automatically.



Set the Equalizer as shown on page 17. Press the VOLUME +/- buttons ❶ to increase or decrease the volume. To stop playback, press the Power/Stop button ❷; the Stop indicator will appear.



To turn the unit off, press and hold the Power/Stop button; "Hold Down To Power Off" will appear in the display. The unit will turn off after it counts up from one to three. Do not release the Power/Stop button until the unit turns off.

**NOTE:**

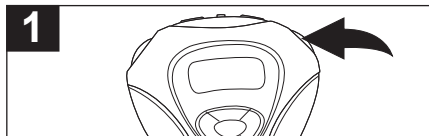
- See pages 8 through 16 for information on uploading MP3, WMA and WAV files to this unit.

**NOTE (AUTO RESUME):** Each time you exit the Music Player mode or turn the unit off, when the unit is turned back on or you enter the Music Player mode again, this unit will resume at the beginning of the last track which was playing before turning the power off or changing mode. To cancel resume, press the Power/Stop button once while in Music Player Stop mode; the unit will return to showing the first file's information. When in the Random or Random Repeat mode (see page 26), the unit will not show the first file's information when you press the Power/Stop button. In the Playlist or Playlist Repeat mode, it will return to show the first selected file's information.

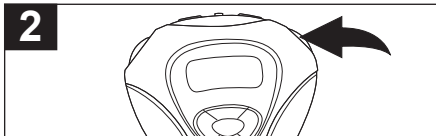


## OPERATION (CONTINUED)

### TO PAUSE PLAYBACK

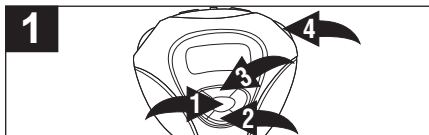


During playback, if you wish to pause the file momentarily, press the PLAY/PAUSE ►|| button; playback will pause, the Pause indicator will appear and the timer will stop counting.



Press the PLAY/PAUSE ►|| button again to resume playback; the sound will return, the Play indicator will appear and the timer will start counting again.

### TO SELECT/BROWSE THROUGH THE FILES



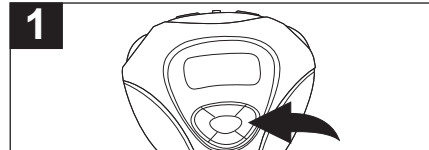
Press the MODE button ❶; the Main Menu will appear. Scroll to Navigation using the >/DN ❷ or EQ/UP ❸ button then press the PLAY/PAUSE ►|| button ❹ to select it.



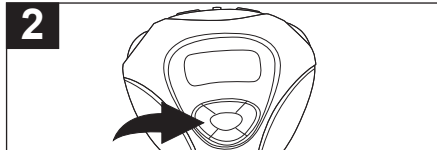
Press the >/DN ❶ or EQ/UP ❷ button to select a memory source, Internal or External, then press the PLAY/PAUSE ►|| button ❸ to select it. You will now be in the root folder (if there is no SD/MMC card inserted, it will directly skip to the root folder.). Press the >/DN ❶ or EQ/UP ❷ button to select a file/folder. If a folder is selected, press the Skip/Search ►|| button ❹ to open the folder, then use the >/DN ❶ or EQ/UP ❷ button to select a file. To return to the root folder, press the Skip/Search ◀◀ button ❺. To select the memory source again, press the MODE button ❶ once. When a desired file is selected, press the PLAY/PAUSE ►|| button ❸ to start playing the selected file.

## OPERATION (CONTINUED)

### FORWARD/REVERSE SKIP

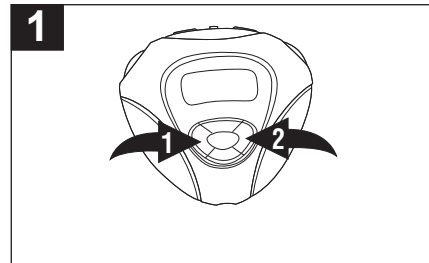


During playback, press the Skip/Search ►|| button to advance the player to the beginning of the next file. Press the Skip/Search ►|| button repeatedly to advance the player to higher-numbered files.



During playback, press the Skip/Search ◀◀ button to move the player back to the beginning of the currently playing file. Press the Skip/Search ◀◀ button repeatedly to move the player back to lower-numbered files.

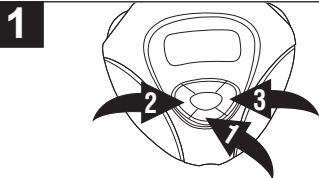
### HIGH-SPEED MUSIC SEARCH



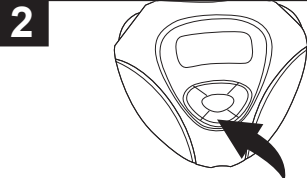
During playback, press and hold the Skip/Search ◀◀ ❶ or ►|| ❷ button to move the player forward or backward within a file to locate a specific musical passage. The player will move forward or backward at high speed as long as the button is held. When you release the button, normal playback will resume.

## OPERATION (CONTINUED)

### TO REPEAT A FILE

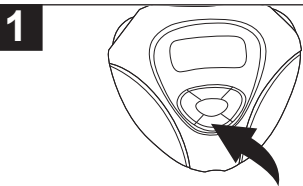


1 To repeat a single file, press the  $\triangleright$ /DN button 1 once while playing a file; the Repeat One indicator  $\mathcal{R}$  will appear in the display. Press the Skip/Search  $\lll$  or  $\ggg$  button to select the specific track that you wish to repeat.

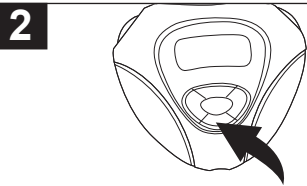


2 The specific track you selected will be repeated continuously. To cancel Repeat playback, press the  $\triangleright$ /DN button repeatedly until the play mode indicators disappear from the display.

### TO REPEAT ALL FILES



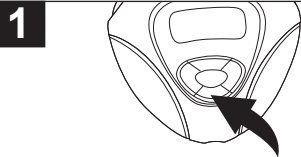
1 To repeat all files, press the  $\triangleright$ /DN button twice while playing a file; the Repeat All indicator  $\mathcal{R}^{All}$  will appear in the display.



2 All tracks on the player will be repeated continuously. To cancel Repeat playback, press the  $\triangleright$ /DN button repeatedly until the play mode indicators disappear from the display.

## OPERATION (CONTINUED)

### TO RANDOMLY PLAY ALL FILES

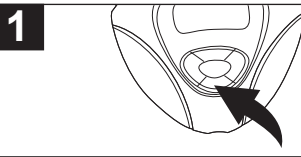


1 To randomly play all the files and then stop, press the  $\triangleright$ /DN button three times while in the Stop mode; the Random indicator  $\mathcal{R}$  will appear in the display.

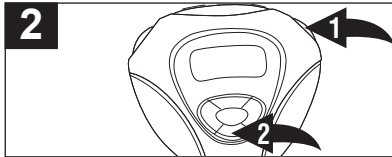


2 Press the Play/Pause button 1 to start playback; the unit will play all the tracks in random order. When all the tracks have been played, the unit will stop. To cancel Random playback, press the  $\triangleright$ /DN button 2 repeatedly until the play mode indicators disappear from the display.

### TO RANDOMLY PLAY ALL THE FILES CONTINUOUSLY



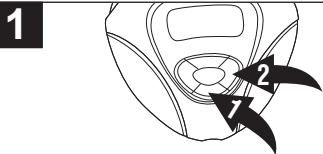
1 To randomly play all the files continuously, press the  $\triangleright$ /DN button four times while in the Stop mode; the Random Repeat indicator  $\mathcal{R}^{\mathcal{R}}$  will appear in the display.



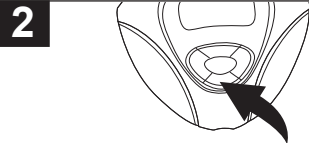
2 Press the Play/Pause button 1 to start playback; the unit will play all the tracks in random order continuously. To cancel Random Repeat playback, press the  $\triangleright$ /DN button 2 repeatedly until the play mode indicators disappear from the display.

## OPERATION (CONTINUED)

### PLAYING A PLAYLIST (A playlist must be programmed first, see pg. 28)

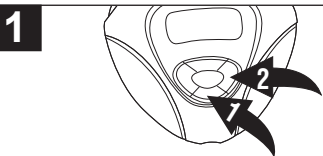


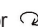
Press the >/DN button ① five times while playing a file; "P" will appear in the display. Press the Skip/Search button ② to start playing the first track of the playlist.

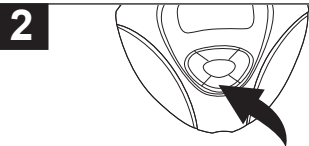


The unit will play the playlist once and then stop. To cancel Playlist playback, press the >/DN button repeatedly until the play mode indicators disappear from the display.

### REPEATEDLY PLAYING A PLAYLIST (A playlist must be programmed first, see pg. 28)



Press the >/DN button ① six times while playing a file; "P" and the Repeat indicator  will appear in the display. Press the Skip/Search button ② to start playing the first track of the playlist.



The unit will play the playlist repeatedly. To cancel Repeat Playlist playback, press the >/DN button repeatedly until the play mode indicators disappear from the display.

## OPERATION (CONTINUED)

### CREATING A PLAYLIST



Press the MODE button ①; the Main Menu will appear. Scroll to Browse using the >/DN ② or EQ/UP ③ button then press the PLAY/PAUSE button ④ to select it.



Press the >/DN ① or EQ/UP ③ button to select a memory source, Internal or External, then press the PLAY/PAUSE button ④ to select it. You will now be in the root folder (If there is no SD/MMC card inserted, it will directly skip to the root folder.). Press the >/DN ① or EQ/UP ③ button to select a file/folder. If a folder is selected, press the Skip/Search button ⑤ to open the folder, then use the >/DN ① or EQ/UP ③ button to select a file. To return to the root folder, press the Skip/Search button ⑤. To select the memory source again, press the MODE button ⑥ once.



Press and hold the PLAY/PAUSE button to add it to the playlist; a program number will appear at the left side of the file (i.e. "01" is the first program file of the playlist, "02" the second file, etc.). Press the PLAY/PAUSE button again to confirm and the program number will disappear.



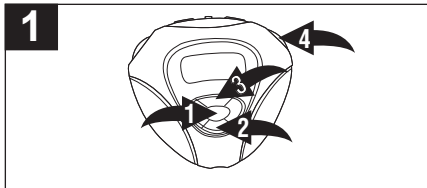
Repeat steps 1 to 3 to add more files.  
**NOTE:** To exit the Browse menu and return to the Main menu, press the MODE button repeatedly until the Main menu appears in the display. See page 27 for how to play the playlist.

#### NOTES:

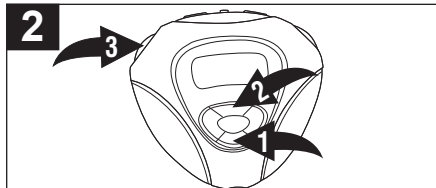
- You can only program the same file into the playlist once.
- When you remove the External memory (SD/MMC card) from the unit, the playlist will be cleared.

## OPERATION (CONTINUED)

### TO VIEW/CLEAR A PLAYLIST FILE/CLEAR THE PLAYLIST



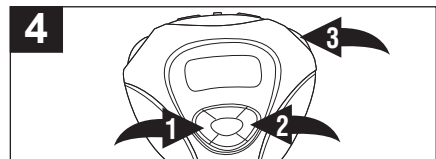
Press and hold the MODE button ❶ until the Settings menu appears in the display. Scroll to Playlist using the >/DN ❷ or EQ/UP ❸ button then press the PLAY/PAUSE >|| button ❹ to select it; the Playlist will appear. Use the >/DN ❷ or EQ/UP ❸ button to view or scroll through the playlist.



To clear the file or all files, select the file to delete using the >/DN ❶ or EQ/UP ❷ button then press the Power/Stop button ❸.



Press the >/DN ❶ or EQ/UP ❷ button to select CLEAR ITEM or CLEAR LIST, then press the PLAY/PAUSE >|| button ❸.



Press the Skip/Search << ❶ or >> ❷ button to select NO or YES, then press the PLAY/PAUSE >|| button ❸ to confirm. If you select YES and confirm, the file/files will then be deleted. If you select NO and confirm, the file/files will not be deleted.

## OPERATION (CONTINUED)

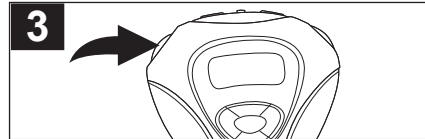
### DELETING A FILE



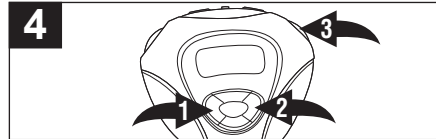
Press the MODE button ❶; the Main menu will appear. Scroll to Browse using the >/DN ❷ or EQ/UP ❸ button then press the PLAY/PAUSE >|| button ❹ to select it.



Press the >/DN ❶ or EQ/UP ❷ button to select a memory source, Internal or External, then press the PLAY/PAUSE >|| button ❸ to select it. You will now be in the root folder (If there is no SD/MMC card inserted, it will directly skip to the root folder.). Press the >/DN ❶ or EQ/UP ❷ button to select a file/folder. If a folder is selected, press the Skip/Search >> button ❹ to open the folder, then use the >/DN ❶ or EQ/UP ❷ button to select a file. To return to the root folder, press the Skip/Search << button ❺. To select the memory source again, press the MODE button ❻ once.



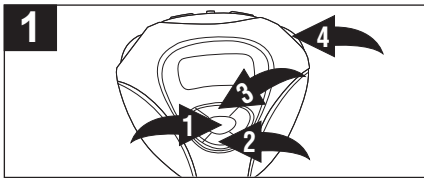
After the file is selected, press the Power/Stop button.



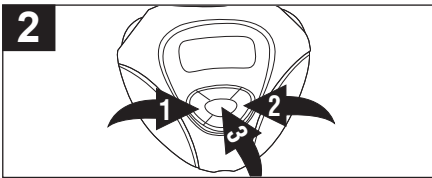
Press the Skip/Search << ❶ or >> ❷ button to select NO or YES, then press the PLAY/PAUSE >|| button ❸ to confirm. If you select YES and confirm, the file will then be deleted. If you select NO and confirm, the file will not be deleted.

## OPERATION (CONTINUED)

### TO SET THE CONTRAST

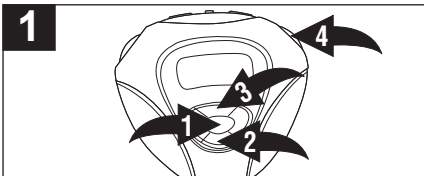


Press and hold the MODE button ❶ until the Setting menu appears in the display. Scroll to Contrast using the  $\triangleright$ /DN ❷ or EQ/UP ❸ button then press the PLAY/PAUSE  $\blacktriangleright$ || button ❹ to select it; the Contrast setting will appear.

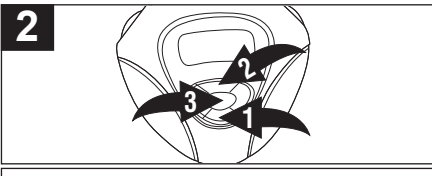


Set the desired contrast using the Skip/Search  $\blacktriangleleft$ ❶ or  $\blacktriangleright$ ❷ button. Press the MODE button ❸ twice or wait a few seconds to exit the menus.

### TO SET THE BACKLIGHT



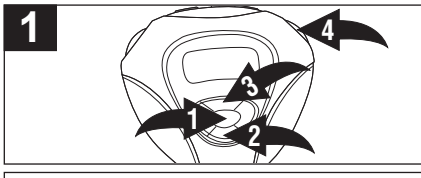
Press and hold the MODE button ❶ until the Setting menu appears in the display. Scroll to Backlight using the  $\triangleright$ /DN ❷ or EQ/UP ❸ button then press the PLAY/PAUSE  $\blacktriangleright$ || button ❹ to select it; the Backlight setting will appear.



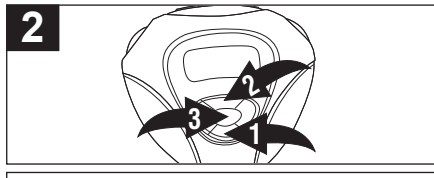
Scroll using the  $\triangleright$ /DN ❶ or EQ/UP ❷ button to select a desired backlight setting (Always Off, 5 seconds, 10 seconds, 15 seconds or Always On). This is the time the backlight will be lit before turning off when no buttons are pressed. Select Always Off and the backlight will not light. Press the MODE button ❸ twice or wait a few seconds to exit the menus.

## OPERATION (CONTINUED)

### TO SET THE PLAY TIMER

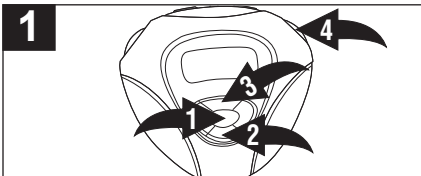


Press and hold the MODE button ❶ until the Setting menu appears in the display. Scroll to Play Timer using the  $\triangleright$ /DN ❷ or EQ/UP ❸ button then press the PLAY/PAUSE  $\blacktriangleright$ || button ❹ to select it; the Play Timer setting will appear.

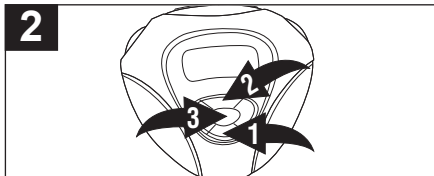


Scroll using the  $\triangleright$ /DN ❶ or EQ/UP ❷ button to select a desired play timer setting (Elapsed or Remaining). Press the MODE button ❸ twice or wait a few seconds to exit the menus.

### TO SET THE POWER SAVINGS



Press and hold the MODE button ❶ until the Settings menu appears in the display. Scroll to Power Savings using the  $\triangleright$ /DN ❷ or EQ/UP ❸ button then press the PLAY/PAUSE  $\blacktriangleright$ || button ❹ to select it; the Power Savings setting will appear.



Scroll using the  $\triangleright$ /DN ❶ or EQ/UP ❷ button to select Disable, 1 minute, 3 minutes, 5 minutes. This is the time the unit will stay on if it is not playing and no buttons have been pressed for the set time. Press the MODE button ❸ twice or wait a few seconds to exit the menus.

## OPERATION (CONTINUED)

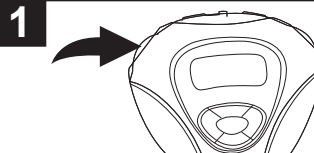
### TO VIEW THE SYSTEM INFO



Press and hold the MODE button ❶ until the Settings menu appears in the display. Scroll to System Info using the >/DN ❷ or EQ/UP ❸ button then press the PLAY/PAUSE ►|| button ❹ to view the System Information. Press the MODE button ❶ to exit System Info; the Settings menu will then reappear.

## OPERATION (CONTINUED)

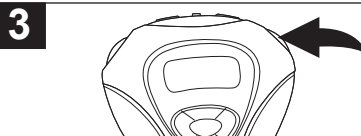
### USING THE STOP WATCH



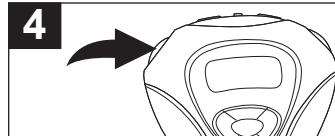
Turn the unit on by pressing the Power/Stop button; the Memorex start screen will appear in the display temporarily. Then the Music Player menu will appear and the MP3/WMA track's information will appear in the display.



Press the MODE button ❶; the Main menu will appear in the display. Scroll to Stop Watch using the >/DN ❷ or EQ/UP ❸ button then press the PLAY/PAUSE ►|| button ❹ to select it; the Stop Timer will appear.



Press the PLAY/PAUSE ►|| button to start the timer; the timer will then start counting up. Press again to stop the timer; the timer will then stop counting. Press yet again to start the timer up again.



Press the Power/Stop button to reset the timer to "00:00:00.00".

#### NOTES:

- The MP3/WMA files can still be played back while using the stop watch. When listening to MP3/WMAs, follow steps 2 through 4 above to operate the stop Watch.
- To turn off MP3/WMA playback when in the Stop Watch mode, you need to turn off the unit or change the unit back to MP3 mode.

## TROUBLESHOOTING GUIDE

If you experience a problem with this unit, check the chart below before calling for service.

SYMPTOM	CAUSE	SOLUTION
Unit will not turn on.	Dead battery, or not installed properly.	Replace battery and install properly.
	The Lock feature is activated.	Deactivate Lock feature as described on page 17.
	Battery/card cover is not put back.	Put the battery/card cover back on.
No sound.	Headphones are not inserted.	Insert headphones.
	Volume is set too low.	Raise the volume.
	DRM files copied & pasted.	See note on pages 14-15.
	The MP3 or WMA files are corrupted.	Download uncorrupted files.
FM distorted.	Station not tuned.	Retune station and extend headphone wire.
Download Failure.	Damaged USB cable.	Replace cable.
The computer is not recognizing the player.	The USB cable is not securely connected.	Make sure USB cable is securely connected.
	Driver is not installed or computer is not compatible.	Install driver and/or see pages 8 through 11 for compatibility.
WMA files with DRM cannot playback.	Incorrect downloading methods.	See pages 14 through 15 to download WMA files with DRM.

## TROUBLESHOOTING GUIDE (CONTINUED)

SYMPTOM	CAUSE	SOLUTION
No buttons work.	The Lock feature is activated.	Deactivate Lock feature as described on page 17.
	Unit needs to be reset or firmware needs to be updated.	Reset unit and/or update firmware, see pages 37-38.
Unit acting erratically.	Unit needs to be reset or firmware needs to be updated.	Reset unit and/or update firmware, see pages 37-38.
WMA files with DRM cannot playback.	Incorrect downloading methods.	See pages 14-15 to download WMA files with DRM.

## FORMATTING THE PLAYER

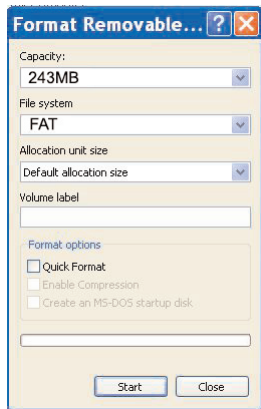
### Formatting the Player

**WARNING!** Do not format this player unless it stops working and you are instructed to do so by technical support personnel.

1. Use the USB cable to connect the player and the computer.
2. Double click on My Computer, right click "Removable Disk" and left click on "Format".
3. At the "Format" window, select "FAT" from the file system pull-down menu, then click "Start" to format the unit (see figure to the right).

**NOTE:** Make sure you have selected "FAT" at the file system pull-down menu, otherwise after formatting, the player will not work properly.

4. Click OK to confirm and the player will start to format.
5. When finished, click "Close" to close the Format window.



## UPDATING THE FIRMWARE

**WARNING!** Do not update the firmware unless you are experiencing problems with your digital audio device. Incorrect or faulty firmware installation will cause the player to stop functioning.

1. Download the updated firmware at [www.memorexelectronics.com](http://www.memorexelectronics.com).
2. Unzip the file, then double click setup.exe in the Desktop folder to install the software to your computer.
3. Connect the player to the computer using the supplied USB cable and the installation screen will appear. (If the installation screen does not appear, unplug the USB cable and turn off the unit). Connect to the computer again and press and hold the Power/Stop button until the installation screen appears.
4. Follow the on-screen instructions to install the driver.
5. When finished, click START and locate the newly installed software "Memorex Audio Player" and select "Firmware Download".

## RESETTING THE UNIT

If the unit acts erratically, reset the unit by removing the battery for a few seconds and then reinserting.



## SPECIFICATIONS

<b>Audio</b>	Frequency Range	20Hz – 20KHz
	Headphones Output	20mW, 16ohm (Max. Vol)
	S/N Ratio	85db (MP3)
<b>File Support</b>	MP3	MPEG 1/2/2.5 Layer 3
	WMA	Windows Media Audio (WMA file with DRM)
	WAV	ADPCM encoding
	Bit Rate	8kbps – 320kbps
	Tag Info	ID3 Tag
<b>FM Tuner</b>	FM Frequency Range	87.5MHz–108MHz
	Antenna	Headphones/Earphones Cord Antenna
<b>General</b>	Dimension	75 x 68 x 25 mm
	Weight	44g (without battery)
	Battery	1 x AAA battery
	LCD	Full Graphic with Backlight
	Language	English
	USB	USB 2.0
	Built-in Memory	256MB
	Max. Playtime	Approx. 18 hours (128kbps, MP3)
	Supported OS	Win ME, 2000, XP and Mac OS X Win 98SE (Driver is required)
	Operating Temperature	23° F to 104° F (-5° C to 40° C)

**Specifications are subject to change without notice.**

FOR FIRMWARE UPGRADE, PLEASE VISIT OUR WEBSITE AT  
**[WWW.MEMOREXELECTRONICS.COM](http://WWW.MEMOREXELECTRONICS.COM)**  
TO CHECK IF THERE IS NEW FIRMWARE AVAILABLE.

FOR ADDITIONAL SET-UP OR OPERATING ASSISTANCE,  
PLEASE VISIT OUR WEBSITE AT  
**[WWW.MEMOREXELECTRONICS.COM](http://WWW.MEMOREXELECTRONICS.COM)**  
OR CONTACT CUSTOMER SERVICE AT (954) 660-7100.

PLEASE KEEP ALL PACKAGING MATERIAL FOR AT LEAST 90  
DAYS IN CASE YOU NEED TO RETURN THIS PRODUCT TO YOUR  
PLACE OF PURCHASE OR TO MEMOREX.

FOR PARTS AND ACCESSORIES, CONTACT FOX INTERNATIONAL  
AT 1-800-321-6993.